

GHH RAND®

CF75D8 – Oil-Injected Screw Compressor Airend

The CF75D8 is a single stage oil-injected screw compressor airend for belt drive and direct drive systems, which can be used for general industrial applications.

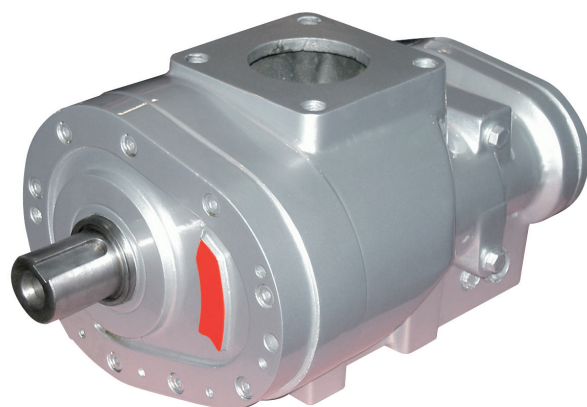
Operating Range

| Parameters | Units | Min | Max |
|--------------------------|---------------------------|------------|-------------|
| Power | kW / hp | 5.5 / 7.4 | 61.3 / 82.2 |
| Discharge Pressure, abs. | bar / psi | 6 / 87 | 16 / 232 |
| Volume Flow | m ³ /min / cfm | 1.1 / 40.3 | 6.2 / 217 |

Medium: Air, Inlet temp. 20°C/68°F, Discharge temp. 80°C/176°F, Inlet pressure 1 bar(a)/14.5 psi(a), RH: 60%

Technical Data

| Parameters | Units | Data |
|------------|-------|------|
| Length | mm | 415 |
| Width | mm | 251 |
| Height | mm | 210 |
| Weight | kg | 57 |
| Inlet DN | mm | 80 |
| Outlet DN | mm | 65 |



GHH RAND recommends:



- Maximize life and efficiency with Primecool or Primecool Plus (food grade)
- Ask your sales rep. for details

GHH RAND Schraubenkompressoren GmbH
Max-Planck-Ring 27 • 46049 Oberhausen • Germany
Phone +49 (0) 208 9994-0 • Fax +49 (0) 208 9994-111
industrial-sales@ghhrand.com • www.ghhrand.com